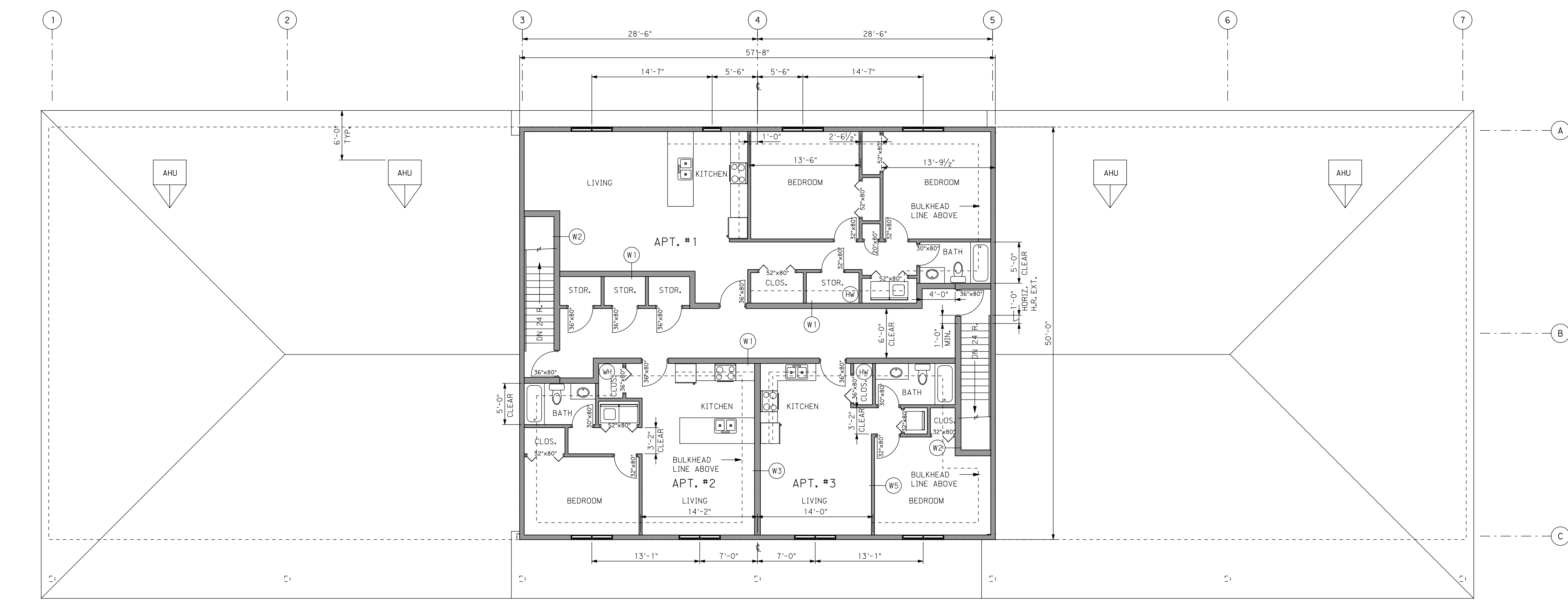
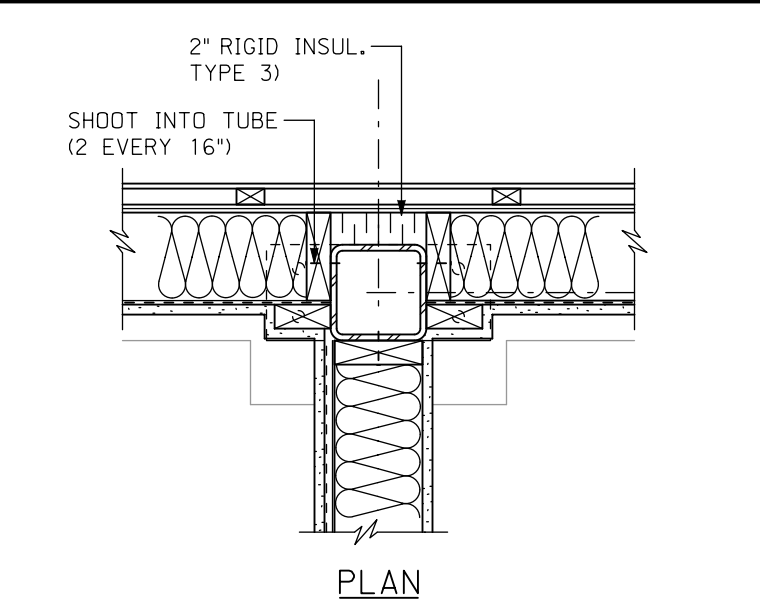


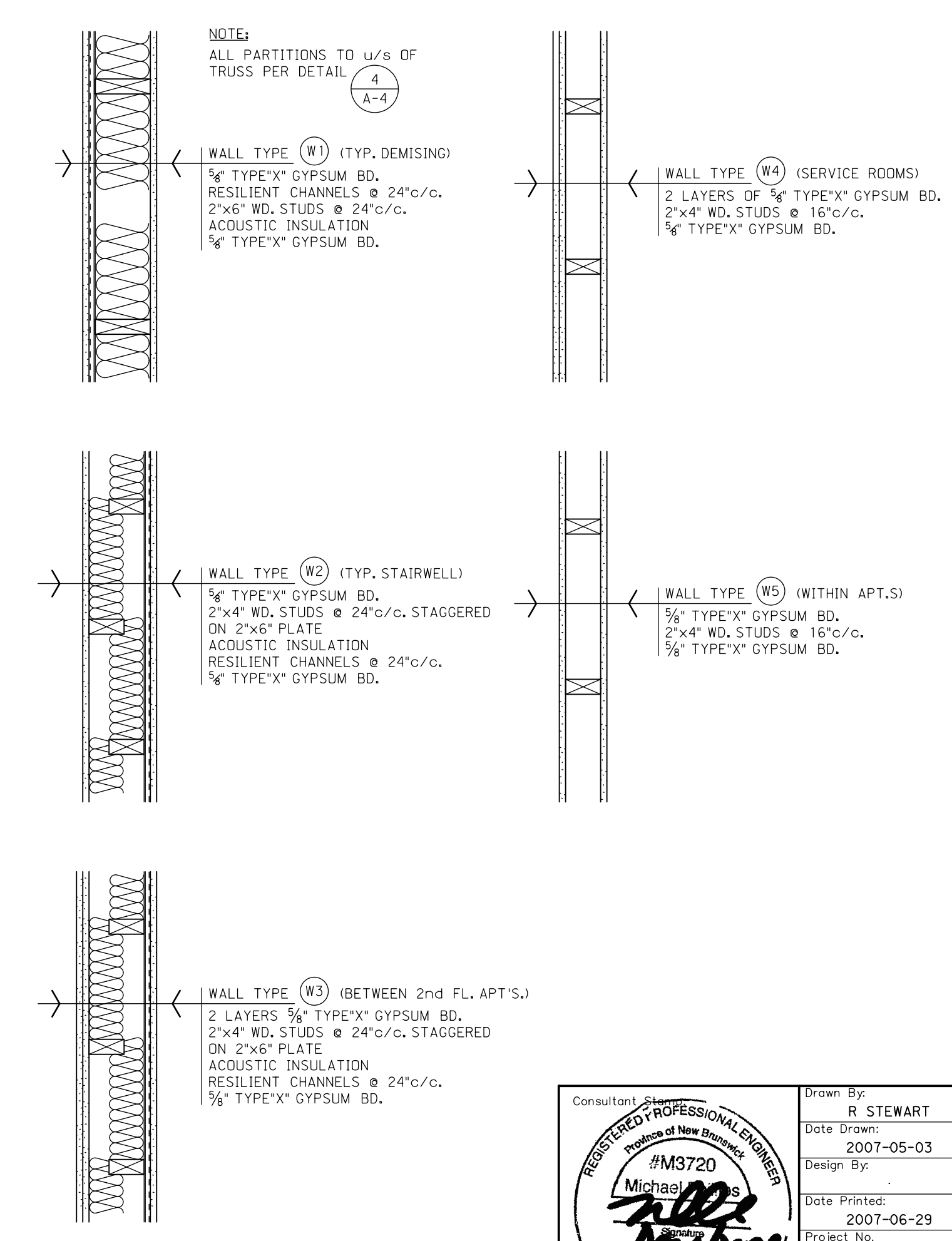
MAIN FLOOR PLAN  
1/8"=1'-0"



2nd FLOOR PLAN  
1/8"=1'-0"



TYP. EXTERIOR COL. DETAIL  
1"=1'-0"



**CODE REVIEW**

322.6.1 GROUP E - 2 STOREYS / 3 STREETS  
 1st FLOOR AREA: 800m<sup>2</sup>  
 2nd FLOOR AREA: 275m<sup>2</sup>  
 1st FLOOR WILL ULTIMATELY BE 'D' OR 'E' OCCUPANCIES.  
 2nd FLOOR IS GROUP 'C'.  
 IF OCCUPANCY BELOW IS GROUP 'D' - REQUIRE 1 HOUR F.R.R. (2 LAYERS 5/8" TYPE 'X' GYPSUM BD.)  
 IF OCCUPANCY BELOW IS GROUP 'E' - REQUIRE 2 HOUR F.R.R. (4 LAYERS 5/8" TYPE 'X' GYPSUM BD.)  
 BETWEEN SUITES:  
 RESIDENTIAL - 45 MIN. F.R.R. WITH STC 50  
 CLASS DD - 45 MIN. F.R.R.  
 CLASS EE - 45 MIN. F.R.R.  
 CLASS DE - 45 MIN. F.R.R.

	Drawn By: R STEWART Date Drawn: 2007-05-03 Design By: Date Printed: 2007-06-29 Project No. 137-015
--	--

Engineering Consultant  
**PHILLIPS ENGINEERING**  
 FREDERICTON  
 NEW BRUNSWICK

**Advanced CAD Services Inc.**  
 CAD Management and Engineering Support Services  
 212 Queen St. Suite 210  
 Fredericton NB, E3B 1A8  
 (506) 458-0707, www.acs-nb.com

Owner  
**CHIPPIN'S LIMITED**  
 89 York Street

Project Title  
 KIMBLE DRIVE  
 NEIGHBOURHOOD SHOPPING CENTER  
 FREDERICTON, NB

Dwg. Title  
**MAIN FLOOR & 2ND FLOOR PLANS**

Dwg. No. **A-1** | Rev. No. **2**  
 Scale 1/8"=1'-0"